

Galvanized Rigid Transition Couplings to Schedule 40/80 PVC Stub-Up



Save at Least **1 Hour** per Installation.

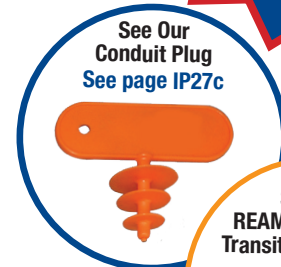


When Concrete is Poured and Metal Below the Slab is Needed

Transitions in Less Than 5 Minutes!

Save Cost on the Rigid Nipple, Tape & Labor

Use for Entire Job - Not Just for Repair



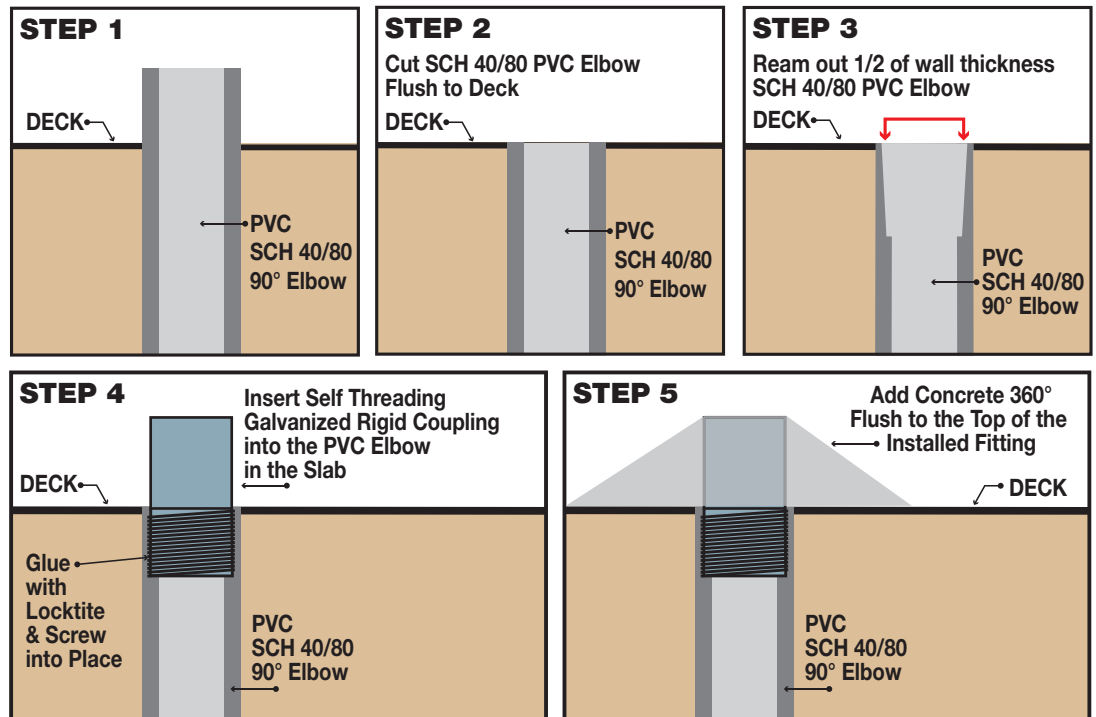
PATENT PENDING



1/2" thru 6"

Transition Couplings	
Size	Catalog #
1/2"	50-PVC-R-GRC
3/4"	75-PVC-R-GRC
1"	100-PVC-R-GRC
1-1/4"	125-PVC-R-GRC
1-1/2"	150-PVC-R-GRC
2"	200-PVC-R-GRC
2-1/2"	250-PVC-R-GRC
3"	300-PVC-R-GRC
3-1/2"	350-PVC-R-GRC
4"	400-PVC-R-GRC
5"	500-PVC-R-GRC
6"	600-PVC-R-GRC

All Above Meet UL651 CSA C22.2, No.85 and US Army Corps Engineers Specifications



Customer must satisfy all codes and owners' specifications.



PATENT PENDING PATENTED



LABELS APPLY TO PRODUCTS ONLY WHERE SHOWN ABOVE

730 Pratt Boulevard • Elk Grove Village, IL 60007
 P: (847) 593-8595 • F: (847) 593-8629 • Toll-free (800) 233-8595
 E: info@spproducts.com • www.spproducts.com

IP13v