

EZ Universal Trapeze Bracket

Supports EMT, IMC and Rigid Steel Conduit, MC & Data Cable



Attach junction boxes and branch circuit conduits above or below the bracket with our Conduit Support Plates (Cat. # CSP-1).

EZ Universal Trapeze Brackets are one-piece hot dip pre-galvanized or stainless steel construction. No clamps, nuts or bolts to stock or lose while working on the lift. Brackets are available in lengths up to 6 feet—no cutting necessary. Use 1/4" threaded rods to allow solid support of brackets at any length or 3/8" threaded rods to support lengths in 1 foot increments.

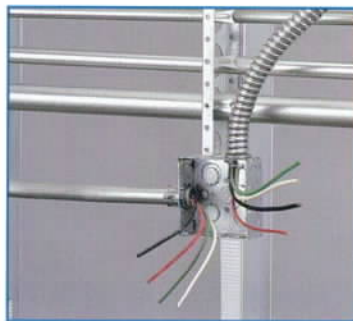
Additional or larger conduits can be secured with minnies thru 1/4" threaded holes on top flange or with a 1/4" nut and bolt thru bottom flange. Attach Bridal Rings, for running MC and data cable, to bottom flange with a 1/4" nut and bolt.

Hang brackets horizontally or mount vertically on walls.

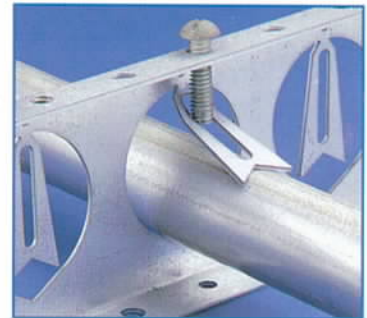
Brackets can also be used for fire protection devices, plumbing, heating, etc.

Save time and money the EZ way!

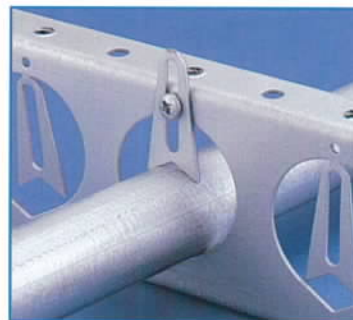
Eliminate labor intensive and costly strut clamps! Bend tabs up, slide conduit thru bracket and bend tabs down per photos above and below.



For greater holding power, use 1/4 x 20 bolts through the threaded top holes to lock tabs on conduit or screw down directly onto conduit if tabs are missing.



Ideal for supporting conduits in computer floors



You can also break tabs off and secure with tek screws as shown at right.

EZ UNIVERSAL TRAPEZE BRACKET CONTRACTOR PRICE SHEET

Cat. #	Accepts Conduit Size	Gauge/ Mat'l	Bracket Length	Conduit Openings	Accepts Rod Size	Static Load Limit [†]	Wt. Ea. Lbs.	Qty. per Box
EZUTB-12-16GS	1/2" thru 1-1/4"	16 galv*	1 ft	5	1/4" or 3/8"	440	.625	50
EZUTB-24-16GS	1/2" thru 1-1/4"	16 galv*	2 ft	10	1/4" or 3/8"	405	1.250	25
EZUTB-36-16GS	1/2" thru 1-1/4"	16 galv*	3 ft	15	1/4" or 3/8"	240	1.875	15
EZUTB-48-16GS	1/2" thru 1-1/4"	16 galv*	4 ft	20	1/4" or 3/8"	220	2.500	15
EZUTB-60-16GS	1/2" thru 1-1/4"	16 galv*	5 ft	25	1/4" or 3/8"	220	3.125	15
EZUTB-72-16GS	1/2" thru 1-1/4"	16 galv*	6 ft	30	1/4" or 3/8"	220	3.750	15

For pricing and availability, refer to Contractor Price Sheet or consult factory. Replacement tabs available.

*16 gauge hot-dip pre-galvanized steel. Above also available in 14 gauge hot-dip pre-galvanized, and 16 gauge stainless steel. Static load limits for these items are greater than shown above. Consult factory for load information, price and delivery

[†] Normal static load limits using one threaded rod at each end. Additional threaded rods can be installed at any point along the span of brackets to increase static load limit.

To place an order, or to request samples and our full-line catalog, call toll-free at 1-800-233-8595

For over 30 years S-P Products has been bringing you a complete line of high-quality, cost-saving ideas and products — from our unique EZ Pull/EZ Read wire harnesses to our innovative EZ Bar Hanger System. We will continue to develop new products and ideas to...help you lower labor costs, reduce waste, do a safer and better job, plus give you excellent service and on-time delivery — 24 hours per day, 365 days per year if necessary, on a negotiated basis.



PRODUCTS, INC.

Productivity and value thru ideas

730 Pratt Blvd. • Elk Grove Village, IL 60007

(847) 593-8595 • Fax (847) 593-8629

Toll-free: 1-800-233-8595

www.spproducts.com • E-mail: info@spproducts.com



File #E185948



IBEW
Union Made



Made in the U.S.A.

Let us be your pre-fab shop to help you be more profitable, competitive and
"Deliver quality electrical jobs on budget — on time"

