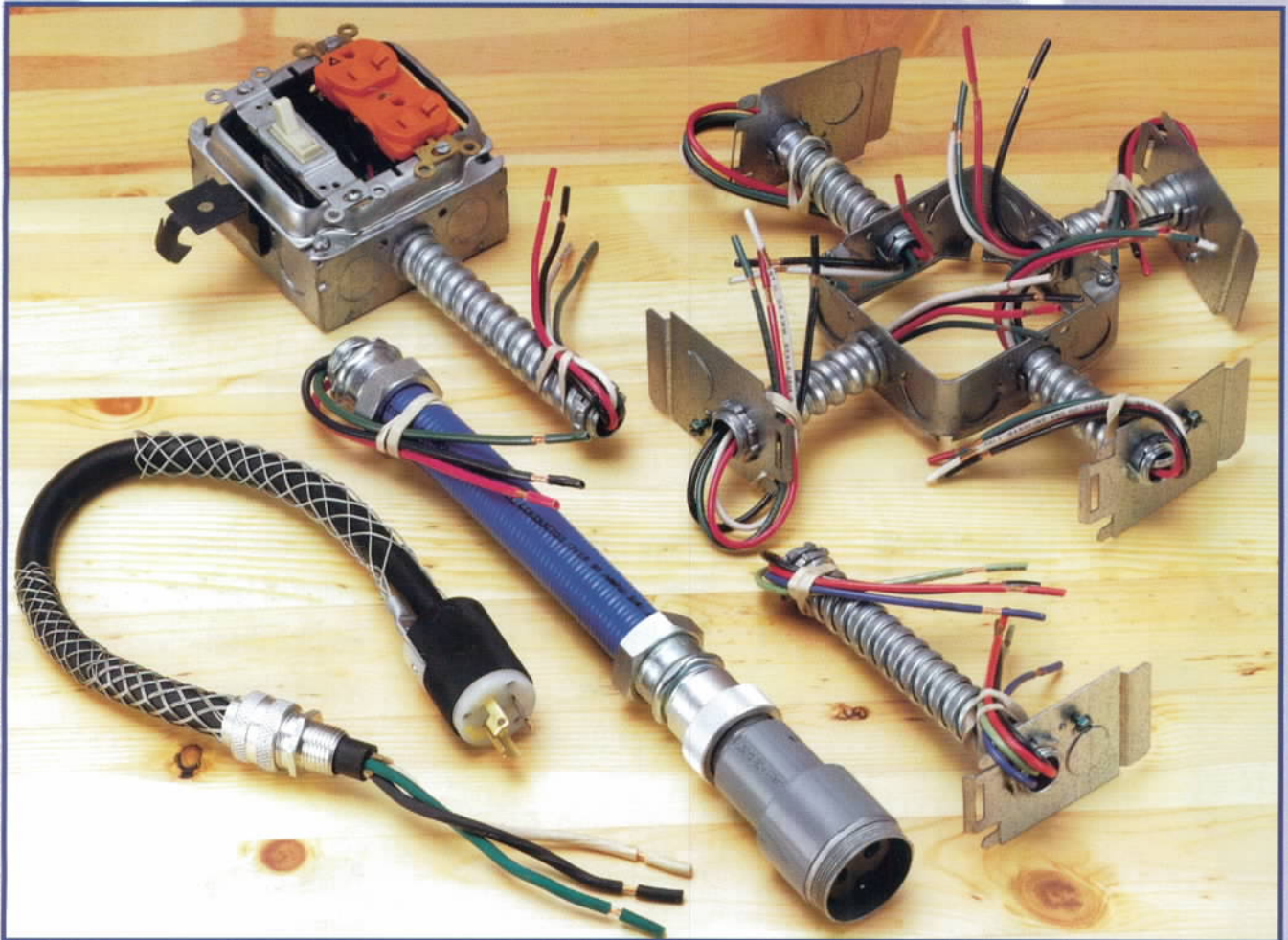


**ANOTHER
INNOVATIVE,
HIGH-QUALITY,
COST-SAVING
PRODUCT FROM
SP PRODUCTS**

Hard-Wired Pre-Fabricated Assemblies

**Products to save you
time and money.**

Ideal for countless applications, from pre-wiring of lighting fixtures in open ceilings to installing Switch Legs and Interconnects for typical room layouts.

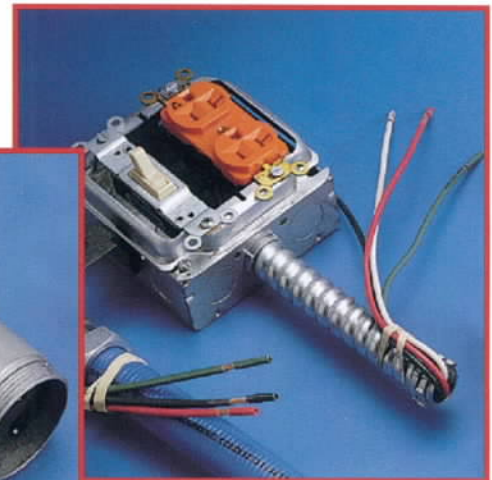
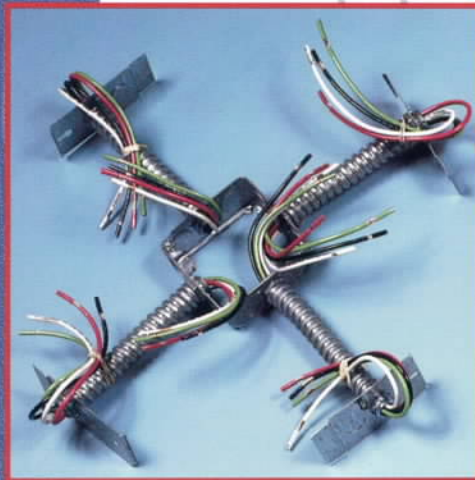


***Fast, On-Time Delivery –
24 hours a day, 365 days a year!***

When you're planning your next job, be flexible... use hard-wired "Econo-Whips" and pre-fabricated assemblies

Our Econo-Whips and Pre-Fabricated Room Assemblies are ideal for countless applications, from pre-wiring of lighting fixtures in open ceilings to installing Switch Legs and Interconnects for typical room layouts.

Each unit can be assembled to your specifications using flexible conduit – steel or aluminum Greenfield, Sealtite, AC90 degree, MC cable, NMLT, ENT, etc.; with connectors, boxes, plaster rings, grounding pigtails, wiring devices, terminals, etc. applied; and with or without wire and cable installed; or various types of cord with straight blade or twist lock devices and kellems type grips applied.



Ideal for many applications and typical room layouts...

Lighting Fixtures
Heating
Refrigeration
Air Conditioning
Motors

Pumps
Fans
Speakers
Dishwashers
Garbage Disposals

Underfloor Boxes
Industrial Lighting
Machine Drops
And much more!

...and on a variety of job sites!

Hotels
Motels
Apartments
Condominiums

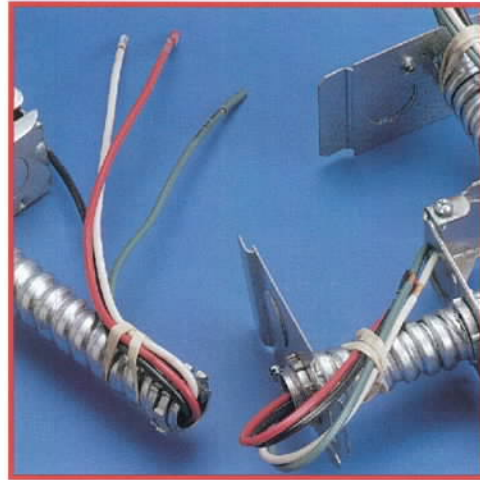
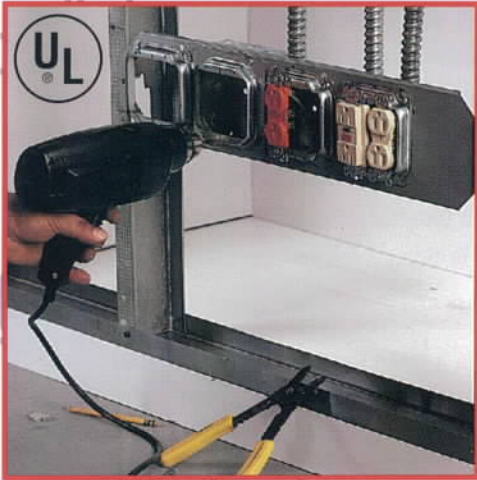
Office Buildings
Hospitals
Schools
Warehouses

Public Buildings
Industrial Plants
And many more!

Keeping the job simple...

For typical room layouts assemblies for each room are packed in labeled containers (i.e., room 701, 702, etc.) and marked wall 1 (entry to room), then clockwise for walls 2, 3 and 4. Assemblies can be combined with our Support Brackets for greater time savings.

Easy-to-remove rubberbands are used on the ends of all whips to prevent pre-stripped wires from tangling and loss of locknuts. Notched insulation remains to protect stranded wires from being frayed or damaged and can be quickly removed for fast termination. Each assembly with wired-in devices is tested for continuity and polarity before shipping.



Delivered on-time and ready to use!

Materials delivered to job site in easy-to-handle packaging, pre-assembled to your specifications. There is no extra material or waste. Empty packaging can be used for rubbish removal.

Econo-Whips are bundled and packed in strong easy-to-handle fiber drums.

3/8" - 10 per bundle
100 or 240 per drum

1/2" - 5 per bundle
60 or 120 per drum



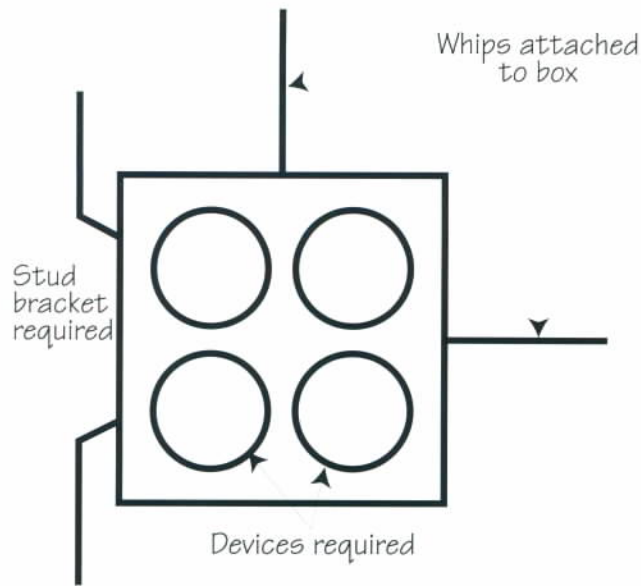
Room assemblies, octopus units, cord hook-ups, floor power output cables, etc. are neatly packed (tangle free) in strong cardboard containers on skids.

(Approx. 36"x36"x36")

All 3/8" FMC (Flex) "Econo-Whips" and Pre-fabricated Assemblies longer than 6 feet are restricted for use with lighting fixtures only.

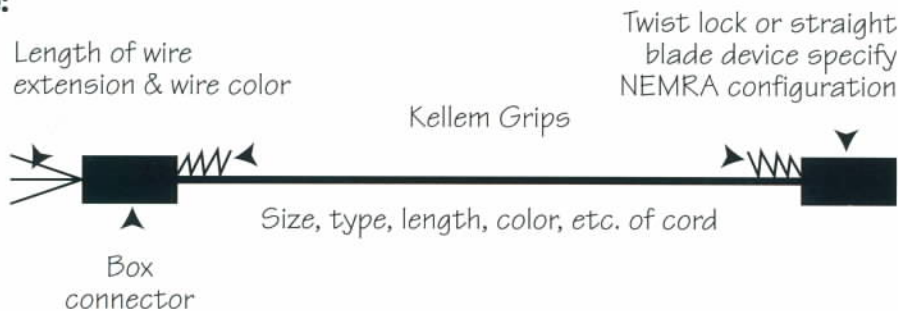
How to order your Hard-Wired Pre-fabricated Assemblies

Typical room layout example:



When submitting specifications for a quote we prefer you **DO NOT** send prints or room plans. They're often incomplete or outdated. Please send your material take-off or simple line drawings showing manufacturers' brands and catalog numbers of all components required in the assembly as well as the positioning, size, type and lengths of all whips attached to the box. Also note wire colors, extension of wire at each end of the whips, if devices are jumped on one circuit, color of wiring devices, grounding pigtail required, etc. Please be careful to cover all details involved and state the quantity of each assembly required. Send us manufacturers specification sheets for special or complicated components – **particularly when you state an equal is acceptable.**

50 Cord example:



Due to variances in local electrical codes and specifying engineers, we don't do take-offs or design jobs nor suggest materials. It is the customer's responsibility to furnish us with exact manufacturer's brands, catalog numbers and specifications required. If this information is not supplied, we both agree that we can supply equals of any USA manufactured products and customer must approve it in writing before we commence production. Also, it is the customer's responsibility to verify our products meet all job specifications and code requirements.

**To place an order, or to request samples and our full-line catalog,
call toll-free at 1-800-233-8595**

**For competitive prices on this or any of our other High-Quality, Cost-Saving Products
contact our distributor or representative in your area.**

And remember our fast, On-Time Delivery – 24 hours a day, 365 days a year!

SP PRODUCTS, INC.
Productivity and value thru ideas

1-800-233-8595

